

PRESSEINFORMATION PRESS RELEASE COMMUNIQUÉ DE PRESSE

BALLUFF

For challenging environments - IO-Link I/O module with expansion port

Page1

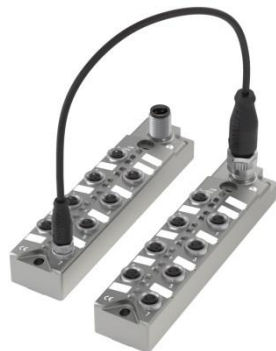
IO-Link sensor/actuator hubs in metal

Balluff is offering new IO-Link sensor/actuator hubs which have been specially designed for the challenging environments of steel plants, welding equipment and machine tools. Rated to -5...70° C, these modules feature a rugged metal housing, an expansion port and M8 connections. Available are a model with 8 inputs as well as a configurable I/O module with 8 I/Os.

Compared with traditional modules these new IO-Link sensor hubs save from 30 to 40% in hardware costs alone. Taking into account the typical IO-Link savings in bus and power cables - just an inexpensive standard cable is all that is needed - the overall savings comes to around 40 to 50%. Another advantage: with the sensor hub you need only one bus address to variably collect sensor signals within an area of 20 meters.

IO-Link sensor hubs not only reduce error-prone interfaces, but also reduce the total wiring, testing and hardware costs. Simple plug-and-play using inexpensive unshielded cables means a system is up and running in no time at all.

The hubs feature an extremely rugged, compact zinc die-cast housing. And thanks to a simple 2-hole mounting design installation is quick and easy. The M8 ports are connected plug-and-play, with Port 7 selectable as an expansion port. Knowing what's happening is also important. Bright, highly visible LEDs on each port indicate the status of each. The maximum load current for sensors and actuators is 200 mA and 300 mA.



Balluff GmbH
Schurwaldstrasse 9
73765 Neuhausen a.d.F.
Germany
Tel. +49 7158 173-0
Fax +49 7158 5010
balluff@balluff.de
www.balluff.com

Press and Public Relations
Dr. Detlef Zienert

Balluff GmbH
Marketing Communication
Phone +49 7158 173-418
Fax +49 7158 173 5010
detlef.zienert@balluff.de

Sample copy requested